

LiFePO4 Battery 12V/24V Bluetooth APP

Instructions

一、 Software running environment and installation

This software runs on Android and IOS mobile phone operating system. Please make sure it has been installed before use. The installation as follows:

1、 Android installation software cannot be downloaded from the play store . The following specified files need to be downloaded and installed from:

<https://watts247.com/manuals/battery/AndroidSmarTEC-BMS-APP-2019.apk>

1-1

2、 IOS mobile phone operating system, please search 'Smar TEC-BMS' in Apple App store, click get to download (see below Figure 1-2) :



Figure 1-2

二、App and Bluetooth connection

1、 Android mobile operating system

- A、 Turn on Bluetooth for Android phone;
- B、 Open the software SmarBat (See Figure 2-1)



Figure 2-1

C、 Operation process

- D、 1) 、 Search for Bluetooth number (Bluetooth number of each battery is pasted on the bottom of the case), Click to connect (see Figure 2-2);

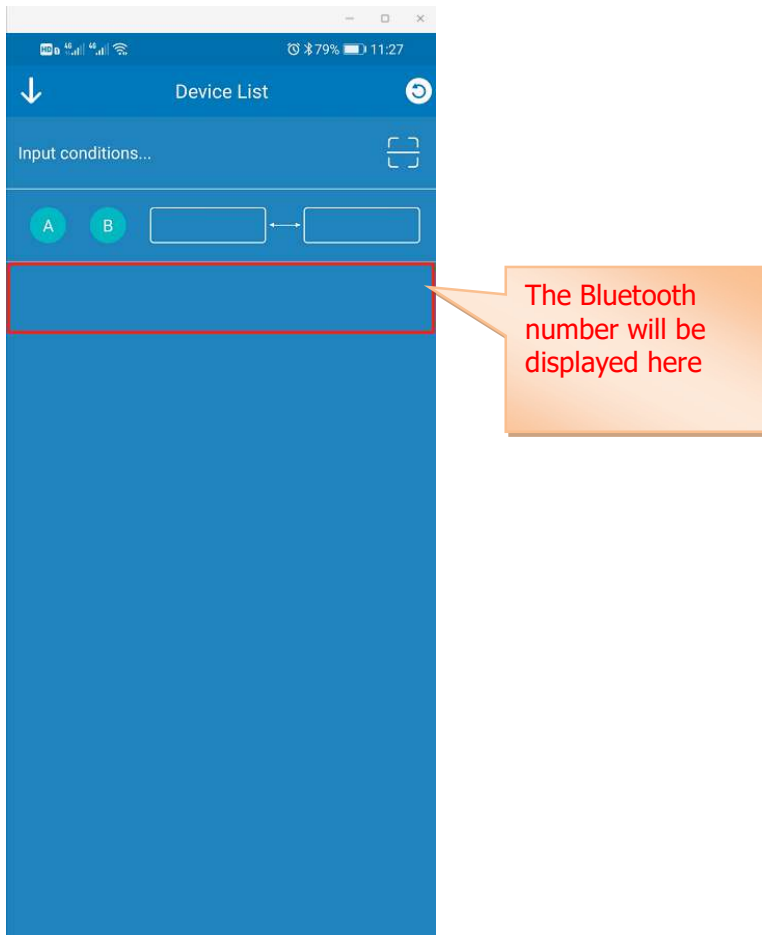


Figure 2-2

2) 、 Actual state (see Figure 2-3)



Figure 2-3)

2、IOS mobile operating system

A、Open IOS Bluetooth;

B、Open the software SmarTEC-BMS (See Figure 2-4)



Figure 2-4

C、Operation process

1) 、 Search for Bluetooth number (Bluetooth number of each battery is pasted on the bottom of the case), Click to connect (see Figure 2-5);

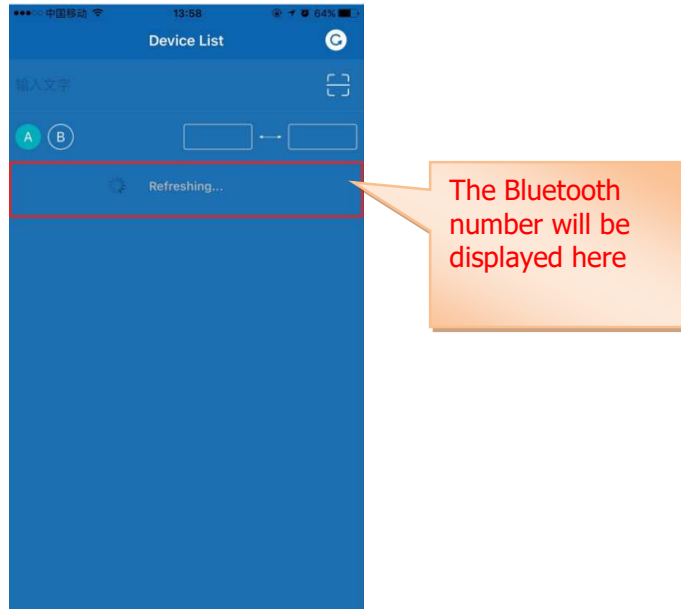


Figure 2-5

2) 、 Actual state (See Figure 2-6)

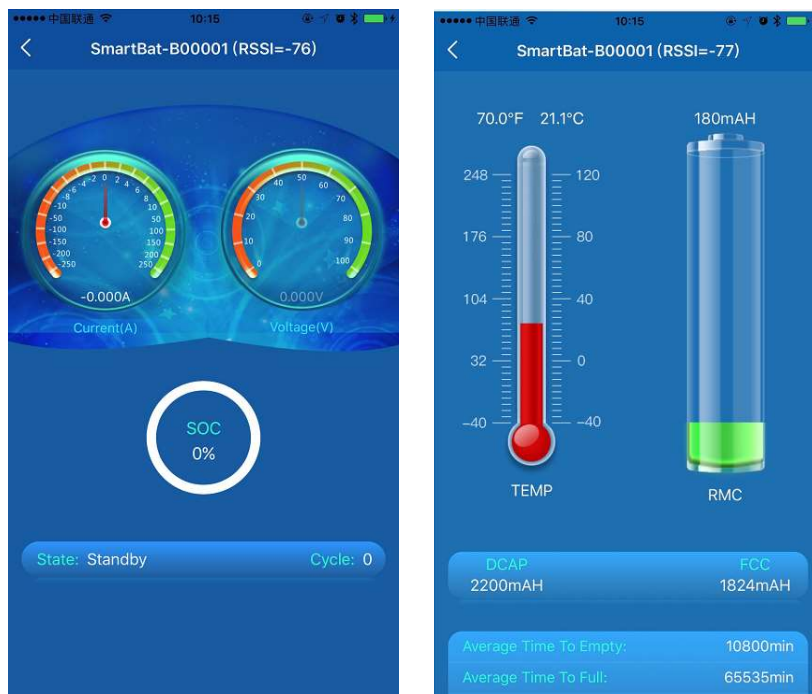


Figure 2-6