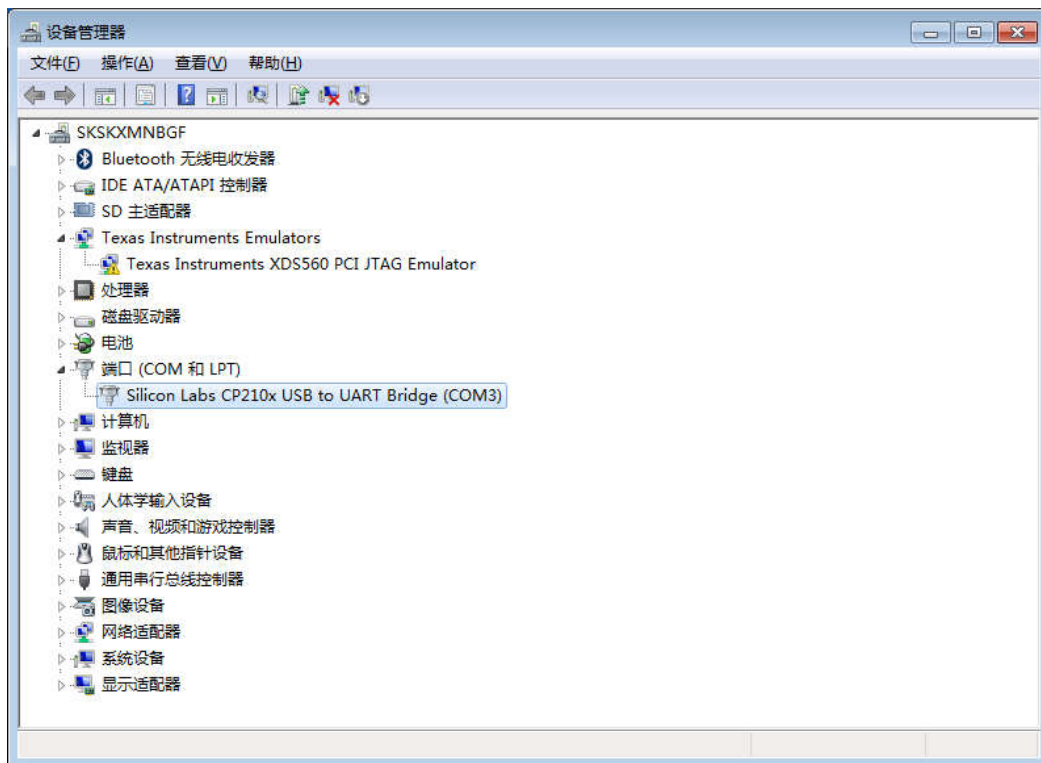
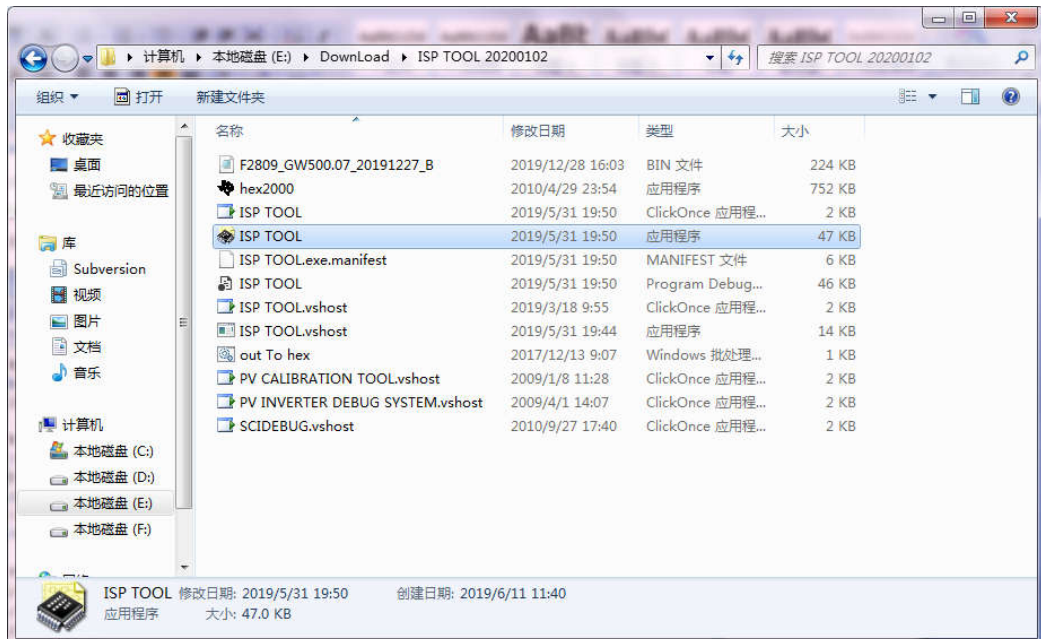


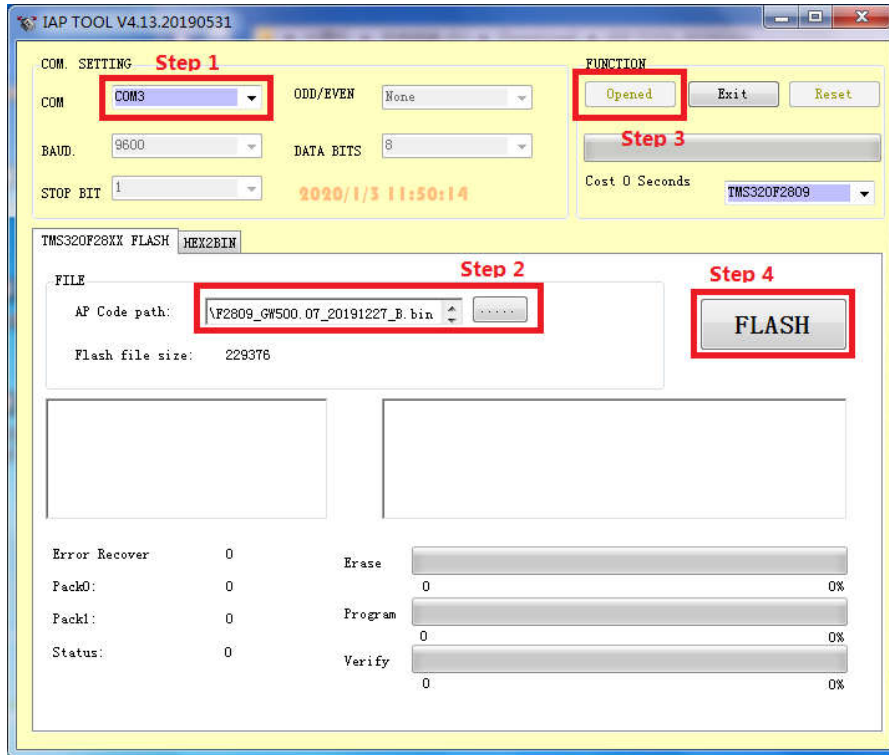
1. Make sure your inverter is working in battery inverter mode without load;
2. Connect your computer to the inverter by USB line;
3. Find the serial com as below:



4. If you can't find COM3 or others as above, you may setup the drivers as below:
CP210x_Windows_Drivers(for win7) or CP210x_Windows_Win10_Drivers(for win10);
5. Open ISP TOOL:

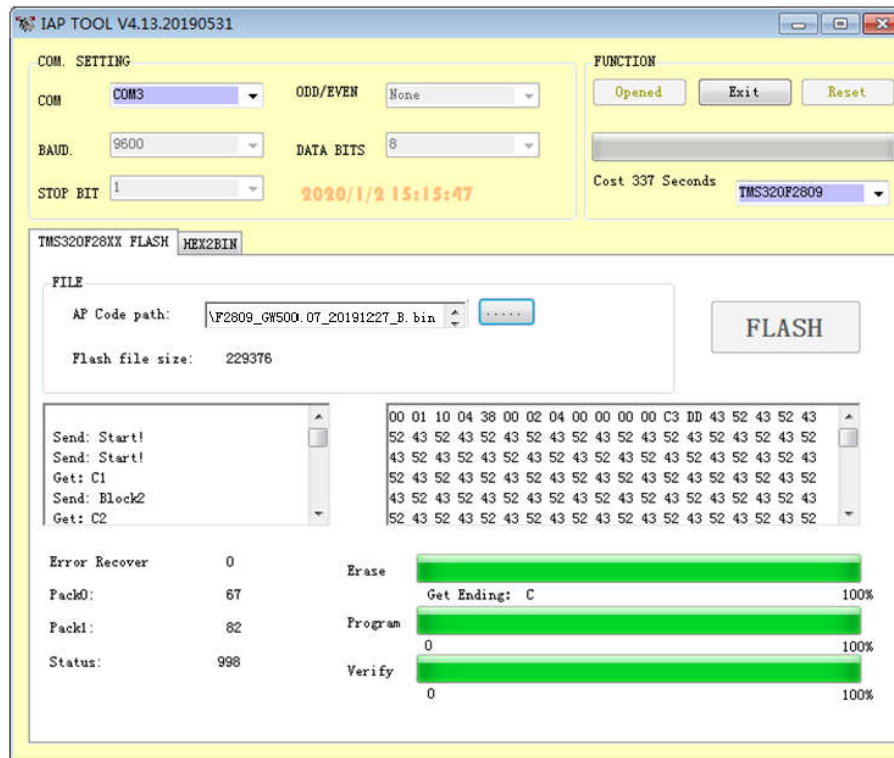


6. you will get the below figure:



Please select as above and then press FLASH to update the inverter program.

7. After you press FLASH button for a few seconds the updating will execute and it will run about 7 minutes; during updating, please don't touch the USB line and make sure the inverter is supplied by the battery.
8. When the updating is finished the inverter will restart by itself.



9. Then close the ISP TOOL and disconnect the USB line.

NOTE:

Sometimes updating may fail, you may close the inverter by disconnect battery break and close ISP tool and disconnect USB line. Confirm the inverter is not power by battery or PV or utility.

Then you connect USB line again, and open ISP tool do the same step as above, after you press Flash button, you let the inverter power on. Wait for several minutes the update will go on.